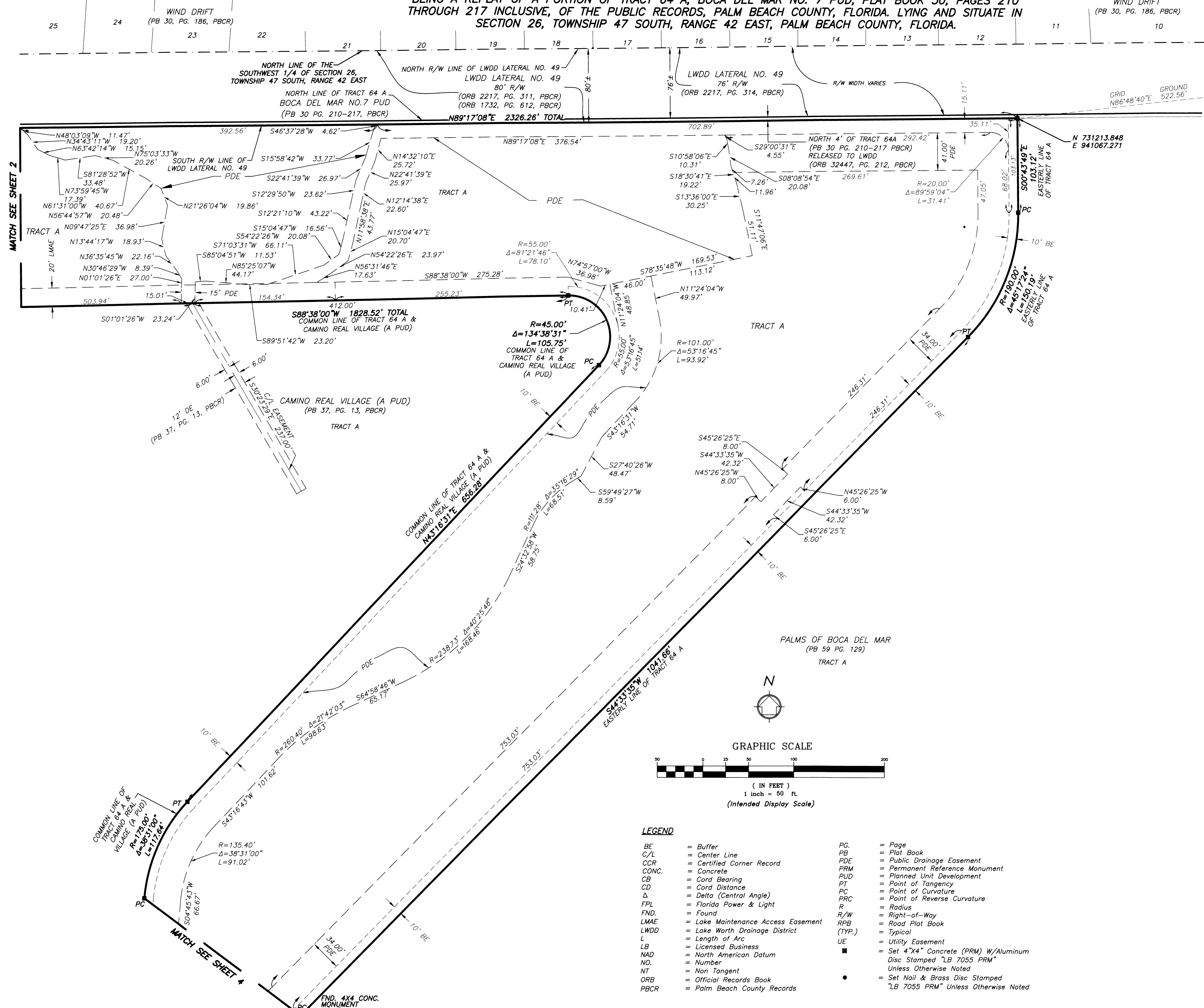


BOCA DEL MAR PUD - SAPPHIRE COVE AT MIZNER VILLAGE

BEING A REPLAT OF A PORTION OF TRACT 64 A, BOCA DEL MAR NO. 7 PUD, PLAT BOOK 30, PAGES 210 THROUGH 217 INCLUSIVE, OF THE PUBLIC RECORDS, PALM BEACH COUNTY, FLORIDA. LYING AND SITUATE IN SECTION 26, TOWNSHIP 47 SOUTH, RANGE 42 EAST, PALM BEACH COUNTY, FLORIDA.

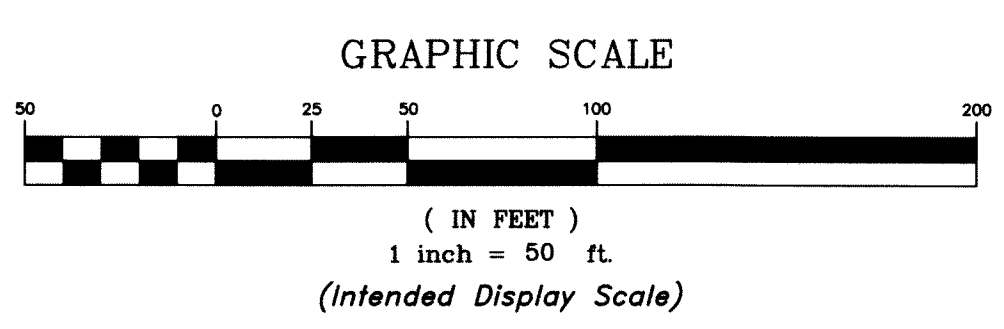
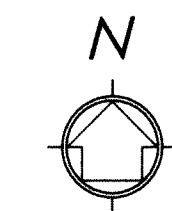
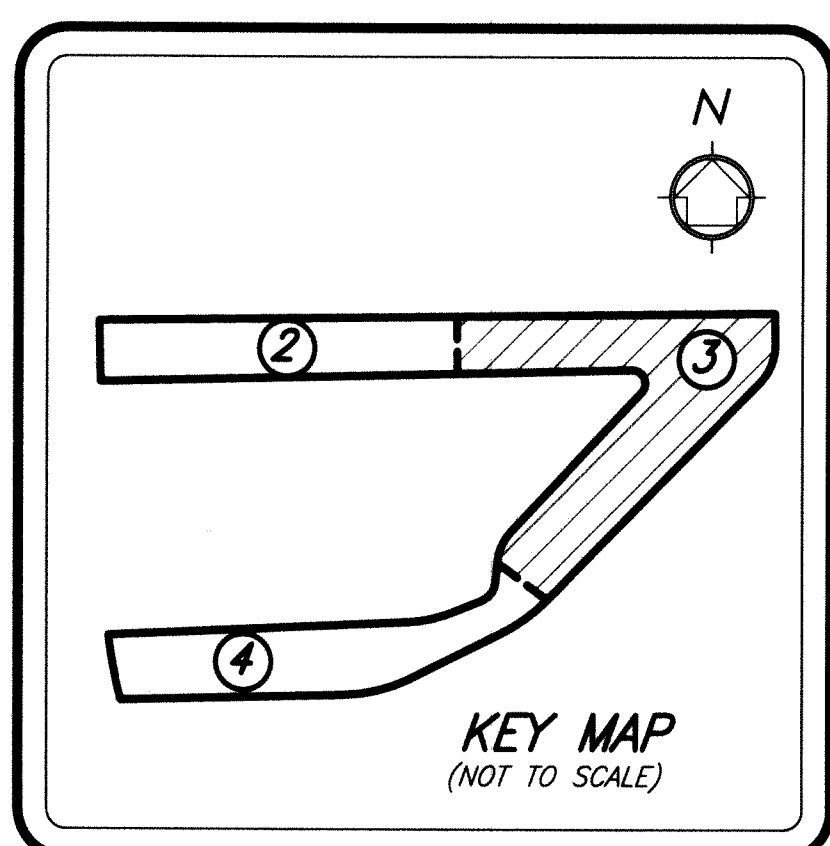
WIND DRIFT
(PB 30, PG. 186, PBCR)

54



PALM BEACH COUNTY
CONTROL POINT
CAM TRAIL
FND. PALM BEACH
COUNTY BRASS DISC
N 731242.919
E 941589.043

SHEET 3 OF 4 SHEETS



- LEGEND**
- | | | | |
|-------|------------------------------------|--------|---|
| BE | = Buffer | PG. | = Page |
| C/L | = Center Line | PB | = Plat Book |
| CCR | = Certified Corner Record | PDE | = Public Drainage Easement |
| CONC. | = Concrete | PRM | = Permanent Reference Monument |
| CB | = Cord Bearing | PUD | = Planned Unit Development |
| CD | = Cord Distance | PT | = Point of Tangency |
| Δ | = Delta (Central Angle) | PC | = Point of Curvature |
| FPL | = Florida Power & Light | PRC | = Point of Reverse Curvature |
| FND. | = Found | R | = Radius |
| LMAE | = Lake Maintenance Access Easement | R/W | = Right-of-Way |
| LWDD | = Lake Worth Drainage District | RPB | = Road Plat Book |
| L | = Length of Arc | (TYP.) | = Typical |
| LB | = Licensed Business | UE | = Utility Easement |
| NAD | = North American Datum | ■ | = Set 4"x4" Concrete (PRM) W/Aluminum Disc Stamped "LB 7055 PRM" Unless Otherwise Noted |
| NO. | = Number | ● | = Set Nail & Brass Disc Stamped "LB 7055 PRM" Unless Otherwise Noted |
| NT | = Non Tangent | | |
| ORB | = Official Records Book | | |
| PBCR | = Palm Beach County Records | | |

NOTE:
COORDINATES SHOWN ARE GRID COORDINATES DATUM - NAD 83 (1990 ADJUSTMENT) STATE PLANE FLORIDA EAST ZONE TRANSVERSE MERCATOR PROJECTION LINEAR UNIT = U.S. SURVEY FEET ALL DISTANCES ARE GROUND SCALE FACTOR = 1.000032176 PLAT BEARING = GRID BEARING GROUND DISTANCE X SCALE FACTOR = GRID DISTANCE



2035 Vista Parkway, West Palm Beach, FL 33411
Phone No. 866.909.2220 www.wginc.com
Cert No. 6091 - LB No. 7055
THIS INSTRUMENT WAS PREPARED BY KELSEY M. SMITH, P.S.M., PROFESSIONAL SURVEYOR AND MAPPER, LICENSE NO. 7096 FOR THE FIRM: WGI, INC.